

Established 1850

PLAINFIELD Township

Value the Past • Embrace the Present • Envision the Future



September 10, 2018

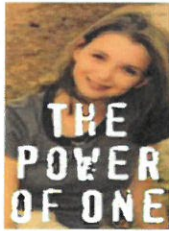
Dear Friends, Business Owners, and Community Leaders:

Plainfield Township is proud to announce its support toward the Rachel's Challenge kindness initiative in our community and are asking for your support to help start a chain reaction.



Rachel Joy Scott was the first person killed in the Columbine High School shooting on April 20, 1999. Testimony shared after this tragedy from those who had been touched by her simple acts of kindness, inspired her family to launch the non-profit organization whose goal is to promote a positive climate in K-12 schools through presentations, trainings, community events, and professional development.

Rachel's Challenge is brought into schools because of escalating problems from bullying, student isolation, teen suicide, discrimination, school violence, and increased disciplinary actions. Rachel's story provides a simple, yet powerful example of how small acts of kindness and acceptance motivate us to consider those people we come in contact with every day with the hope of renewing meaning and purpose in all lives.



Every year:

- Over 1.5 million people are involved in Rachel's Challenge programs
- More than 1,200 schools and businesses are reached
- Over 150 suicides are averted
- Bullying and violence decrease
- Community service and acts of kindness increase.

Rachel's Challenge programs provide evidence-based framework for positive climate and culture in our schools which statistically has shown significant gains in community engagement, leadership potential, faculty/student relationships, and school climate while reducing bullying, alcohol, tobacco and drug use.

Presentations will be held during school for students in all District 202 middle schools and St. Mary Immaculate Parish School, and for the community September 25 at Plainfield East and September 27 at Plainfield Central beginning at 6:30 p.m. The school district has committed to covering 50% of the cost in an effort to educate the youth in the hope of preventing a senseless school tragedy in our community. Plainfield Township has committed to collecting private donations and ask for your support toward the remaining 50%. To date, donations have been received from District 202, Plainfield PTA/PTO, Plainfield Foundation for Excellence, Plainfield Township, State Representative Mark Batinik, and many individuals. Your financial support and attendance at one of the community events would help support this inspiring message. Donations made payable to Plainfield Township can be mailed to 22525 W. Lockport Street, Plainfield, IL 60544.

For additional information, visit the Rachel's Challenge website - www.rachelschallenge.org.

On behalf of the Plainfield Township Board and staff, thank you for considering any contribution toward this inspirational message to promote kindness and help to cultivate a positive climate in our community.

Sincerely,

Tony Fremarek, Supervisor



Supervisor

Tony Fremarek
815.436.8308 P
815.436.5117 F

Trustees

Ernie Knight
Debbie Kraulidis
Eric Nelson
Matthew Starr

Clerk

Chuck Willard

Tax Collector

Brandon Bernicky

Assessor

Erin C. Kljaich
815.436.5110 P
815.436.5117 F

Hwy. Commissioner

Ken Marland
815.436.6090 P
815.436.7050 F

Address

22525 W. Lockport St.
Plainfield, IL 60544

Website

plainfield-township.com